

WISCONSIN RAPIDS/  
ALEXANDER FIELD SOUTH WOOD COUNTY (ISW)

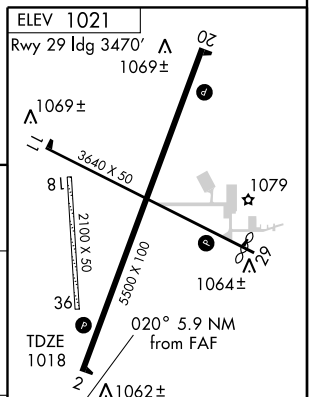
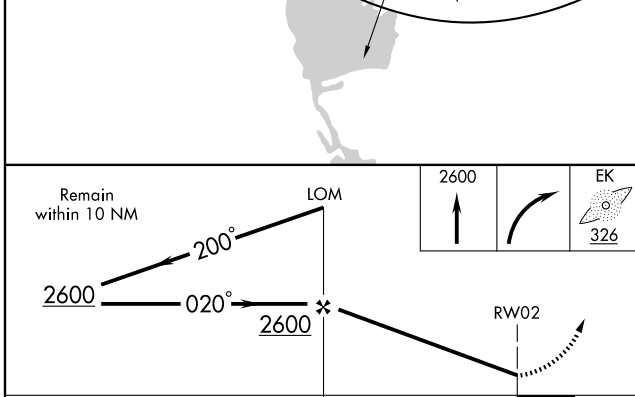
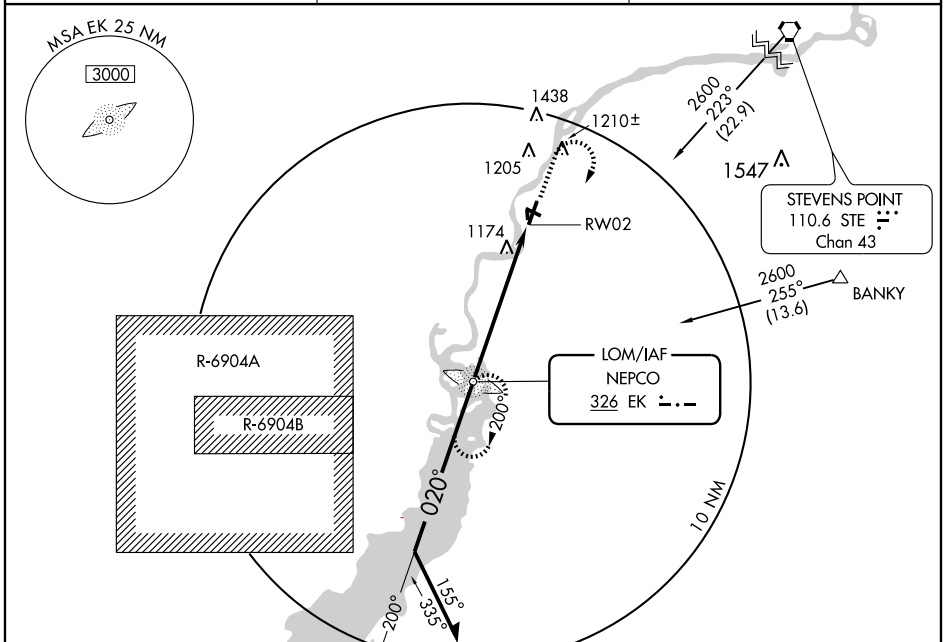
# NDB or GPS RWY 2

LOM EK <b>326</b>	APP CRS <b>020°</b>	Rwy Idg TDZE Apt Elev	<b>5500</b> <b>1018</b> <b>1021</b>
----------------------	------------------------	-----------------------------	---

**▲ NA** Procedure not authorized when R-6904 A and B active.

MISSED APPROACH: Climb to 2600 then right turn direct EK LOM and hold.

ASOS <b>126.575</b>	MINNEAPOLIS CENTER <b>124.4 317.7</b>	UNICOM <b>122.8 (CTAF) 0</b>
------------------------	--	---------------------------------



CATEGORY	A	B	C	D	Knots	60	90	120	150	180
S-2	1480-1	462 (500-1)	1480-1½ 462 (500-1½)	1480-1½ 462 (500-1½)	Min:Sec	5:54	3:56	2:57	2:22	1:58
CIRCLING	1480-1	459 (500-1)	1520-1½ 499 (500-1½)	1620-2 599 (600-2)						

# NDB or GPS RWY 2

EC-3, 14 FEB 2008 to 13 MAR 2008

EC-3, 14 FEB 2008 to 13 MAR 2008