

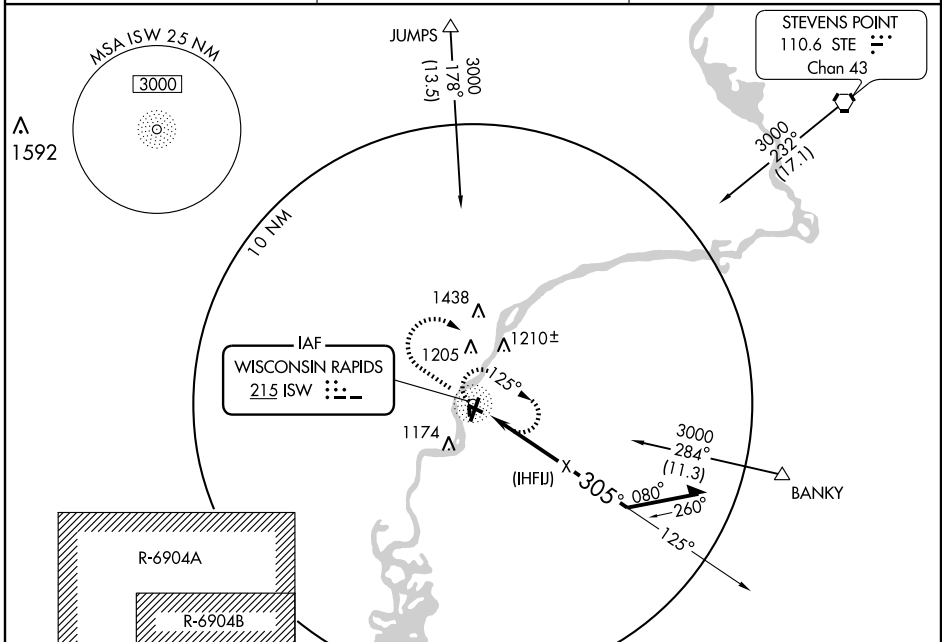
WISCONSIN RAPIDS/
ALEXANDER FIELD SOUTH WOOD COUNTY (ISW)

NDB or GPS RWY 29

NDB ISW 215	APP CRS 305°	Rwy ldg TDZE Apt Elev	3470 1019 1021
-----------------------	------------------------	-----------------------------	---

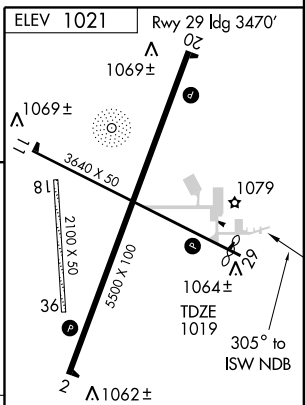
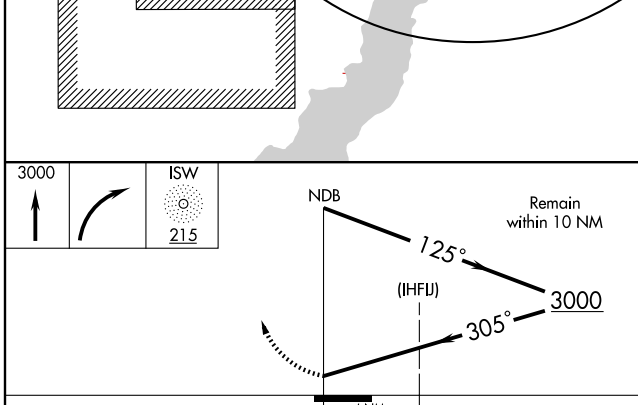
▲ NA MISSED APPROACH: Climb to 3000 then right turn direct ISW NDB and hold.

ASOS 126.575	MINNEAPOLIS CENTER 124.4 317.7	UNICOM 122.8 (CTAF) 0
------------------------	--	---------------------------------



EC-3, 14 FEB 2008 to 13 MAR 2008

EC-3, 14 FEB 2008 to 13 MAR 2008



CATEGORY	A	B	C	D
S-29	1620-1 601 (600-1)		1620-1¾ 601 (600-1¾)	1620-2 601 (600-2)
CIRCLING	1620-1 599 (600-1)		1620-1¾ 599 (600-1¾)	1620-2 599 (600-2)

REIL Rws 2 and 20		MIRL Rws 2-20 and 11-29	
Knots	60	90	120 150 180
Min:Sec			

NDB or GPS RWY 29