

WISCONSIN RAPIDS, WISCONSIN

AL-5430 (FAA)

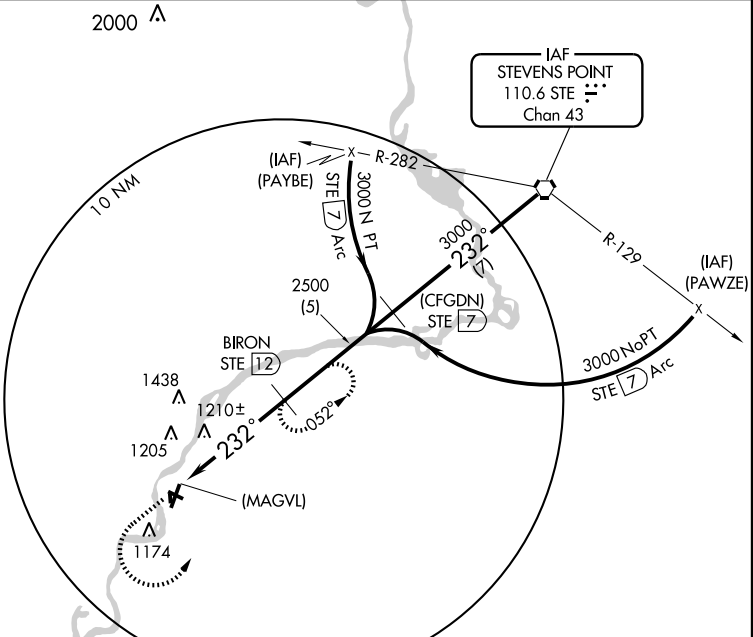
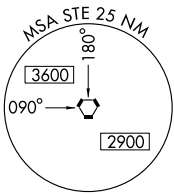
VORTAC STE 110.6 Chan 43	APP CRS 232°	Rwy ldg TDZE Apt Elev N/A N/A 1021
--	------------------------	--

WISCONSIN RAPIDS/
ALEXANDER FIELD SOUTH WOOD COUNTY (ISW)

VOR/DME or GPS-A

MISSED APPROACH: Climb to 1900 then climbing left turn to 2500 via STE R-232 to BIRON and hold.

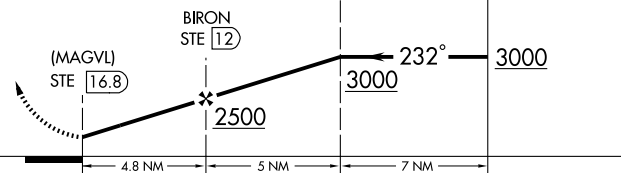
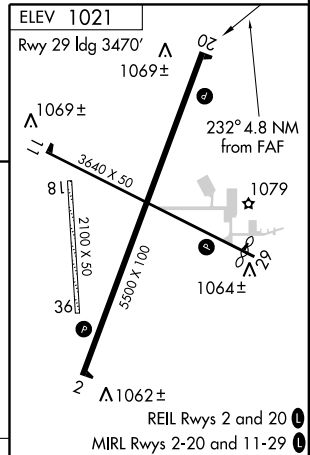
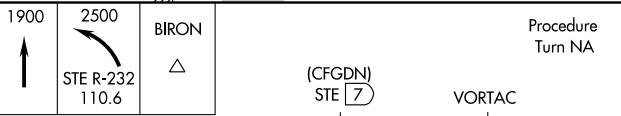
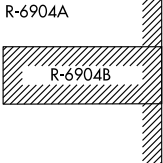
ASOS 126.575	MINNEAPOLIS CENTER 124.4 317.7	UNICOM 122.8 (CTAF) 0
------------------------	--	---------------------------------



IAF
STEVENS POINT
110.6 STE
Chan 43

EC-3, 14 FEB 2008 to 13 MAR 2008

EC-3, 14 FEB 2008 to 13 MAR 2008



CATEGORY	A	B	C	D	Knots	60	90	120	150	180
CIRCLING	1580-1	559 (600-1)	1580-1½ 559 (600-1½)	1620-2 599 (600-2)	Min:Sec					

WISCONSIN RAPIDS, WISCONSIN
Amdt 9A 05020

WISCONSIN RAPIDS/ALEXANDER FIELD SOUTH WOOD COUNTY (ISW)
44° 22'N-89° 50'W

VOR/DME or GPS-A